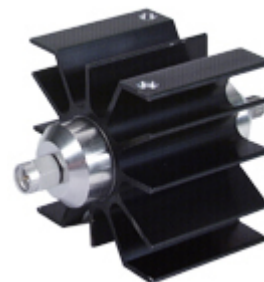


RF Attenuator 5903.19.0002

Description

Standard Attenuator, Medium Power



Product Configuration

Connector (side 1 / side 2)	SMA plug (male) / SMA jack (female)
Interface Standards	IEC 60169-15_MIL-STD-348A/310_CECC 22110

Technical Data

Electrical Data

Nominal impedance	50 Ω
Nominal attenuation	3 dB
Frequency range	DC to 6 GHz
Frequency sub range (GHz)	DC to 2 2 to 6
Attenuation deviation (\pm dB)	0.2 0.3
VSWR max.	1.1 1.25
Power rating	25 Watt average power up to 30 °C ambient temperature, linearly derated to 0 Watt at 130 °C ambient temperature. Convection cooled. 500 Watt peak power, 5 μ s pulse, 0.05 % duty cycle

Mechanical Data

Weight	0.206 kg
--------	----------

Environmental Data

Operating temperature	-55 °C to 130 °C
2011/65/EU (RoHS)	compliant

Material Data

Piece Part (side 1)	Material	Surface Plating
Centre contact	Copper Beryllium Alloy	Gold Plating
Outer contact	Copper Beryllium Alloy	SUCOPLATE (R) Plating
Body	Aluminium	Anodized
Insulator	PFA / PTFE	
Coupling nut	Bronze	SUCOPLATE (R) Plating
Piece Part (side2)	Material	Surface Plating
Centre contact	Copper Beryllium Alloy	Gold Plating
Outer contact	Copper Beryllium Alloy	SUCOPLATE (R) Plating
Body	Aluminium	Anodized
Insulator	PFA / PTFE	

Related Documents

Outline drawing	DOU-00005321
-----------------	--------------

Ordering Information

Single packaging	5903.19.0002
------------------	--------------

Important note	WARNING Beryllia Ceramic Inside! DO NOT sand, scrap or tamper with. Dispose in accordance with all relevant regulations.
----------------	--------------------------------------------------------------------------------------------------------------------------

RF Attenuator 5903.19.0002